

EXTECH i5 Compact IR Camera

Easy-to-Use Troubleshooting Tool - Only 12oz
Affordable InfraRed Camera with high quality image, high accuracy, focus free viewing, and 5000 image microSD card storage

Features:

- High accuracy of 2% and thermal sensitivity of 0.1°C helps you find problems faster and easier — critical for condition monitoring of thermally sensitive targets
- Extremely lightweight resulting in less user fatigue (12oz)
- Pocket sized and fully automatic design makes it incredibly easy-to-use even for first time users — perfect for general purpose use
- Focus free lens for convenient viewing
- 2.8" (71mm) high resolution color LCD
- Double molded rugged design with easy grip handle construction meets IP43 dust/splashproof standards
- >4 hour continuous operation on a single charge for uninterrupted inspections
- MicroSD card stores up to 5000 Radiometric JPEG format images. Each image can be analyzed using the included QuickReport™ PC Software



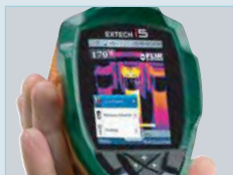
Complete with 512MB microSD Card, miniSD™ adaptor, Li-Ion rechargeable battery with 90-260V AC adaptor/charger with EU, UK, US and Australian plugs, QuickReport™ software with USB Mini-B cable, built-in manual lens shutter, hand strap, and protective hard carrying case



Pocket sized and extremely lightweight—only 12 ounces



Detect hidden problems fast



Large 2.8" color LCD



QuickReport™ PC software enables user to analyze Temperature of all JPEG images from microSD card

Applications:

- Detect hidden problems, make quick damage assessments
- Check for overheating of electrical panels and transformers
- Avoid electrical failures
- Identify faults in heating and cooling systems
- Find problems with motors, fans and bearings
- Generate reports, analyze and document your findings with the easy-to-use software

Ordering Information:

IRC40EXTECH i5 Thermal Imaging Infrared Camera
1950986.....Replaceable Battery Li-Ion Cell 3.6V
T910711Power Supply Charger (100-240VAC, 5VDC, 6W)
CA940.....Heavy Duty Hard Carrying Case

Features

Temperature range	32°F to 482°F (0°C to 250°C)
Image Storage	5000 Images (microSD card memory)
Emissivity	Emissivity Table; 0.1 to 1.0 adjustable
Imaging Performance / Image Presentation	
Field of view/min focus distance	17° X 17°/0.6m (2 ft.)
Focus	Focus free
Thermal sensitivity (N.E.T.D)	<0.1°C at 25°C
Detector Type	Focal plane array (FPA) uncooled microbolometer; 80 X 80 pixels
Spectral range	7.5 to 13µm
Display	2.8" color LCD
Image Controls	Palettes (Iron, Rainbow, and Black/White)
Set-up controls	Date/time, °C/°F, 21 languages
Measurement modes	Spot (with correction for emissivity and reflected temperature)
Power Source / Environmental Specs	
Battery Type	Li-Ion
Battery operating time	>4 hours, Display shows battery status
Charging system	In camera, AC adapter; 3 hours to 90% capacity
AC operation	AC adaptor 90-260VAC, 50/60Hz
Adaptor Voltage	5 VDC output to camera
Operating temperature range	32°F to 122°F (0°C to 50°C)
Storage temperature range	-40°F to 158°F (-40°C to 70°C)
Humidity	Operating and storage 20% to 80%, non-condensing, IEC 359
Shock	25G, IEC 68-2-29
Vibration	2G, IEC 68-2-6
Dimensions/Weight	8.8x3.1x3.3" (223x79x83mm)/<12oz. (340g), including battery