

# Direct Applied Finishes

Section: 07240



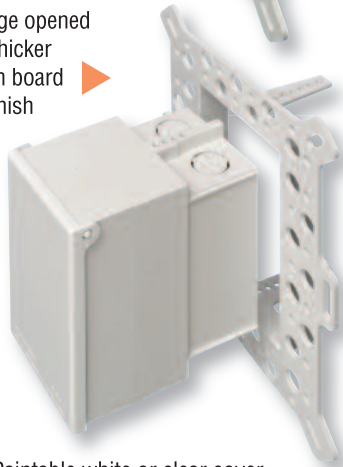
**PCDBVME1W**  
with fixed flange

**PCDBVMA1W**  
with adjustable flange



Flange in position for thin foam or finish thickness

Flange opened for thicker foam board or finish



- Paintable white or clear cover
- UL/CSA Listed weatherproof while in use
- Meets NEC 2005 (National Electric Code)

## Low Profile, Recessed Electrical Box

Product Number	Dimensions/Description	Flange Style	Cover Color
<b>PCDBVME1C</b>	IN BOX™ Electrical box for 1-1/2" (38 mm) EIFS and DEFS foam wall systems.	Fixed	Clear
<b>PCDBVME1W</b>		Fixed	White
<b>PCDBVMA1C</b>	For EIFS and DEFS foam wall systems up to 2" (51 mm) thick.	Adjustable	Clear
<b>PCDBVMA1W</b>		Adjustable	White

Patent pending - Arlington Industries, Inc.

Arlington Industries' IN BOX for EIFS and DEFS is now available from Plastic Components! These one-piece electrical boxes save labor time, and because IN BOX installs in the wall, you'll get a great-looking job too. The cover protrudes from the wall just enough to provide a neat, clean appearance.

The **fixed-flashing style** IN BOX offers superior moisture control in 1-1/2" foam wall systems. It has a large, built-in flange that eliminates the need for a separate flashing.



For foam board up to 2" thick



For 1-1/2" thick foam board

The **adjustable flange style** adjusts to fit any foam board thickness or custom finish in concrete block and stucco applications.

For finishes 1/4" to 2.5" thick on walls 2.75" to 5" deep.

**Application:**

Offers aesthetic value as a low profile, non-metallic electrical box that installs IN the wall. The cover protrudes approximately 3/4" from the surface of the wall, depending on the thickness of the stucco finish.

**Specification:**

Non-metallic electrical box shall be Plastic Components, Inc. InBox # \_\_\_\_\_. Made of UV rated, PVC material. UL and CSA Listed.



Shipped-in-place disposable mud cover

*Caulk all butt joints, intersections and ends.*



800.327.7077  
www.plasticcomponents.com